

203+50 Ditch

248 Centre Symme 5 Points

246+84

244+04

238+00

232+09

200+00

A. F. PARKER

200+00 Street (no name)

B35

215+01

218+40

193700 Mount Fort Lane - 66' St E & W

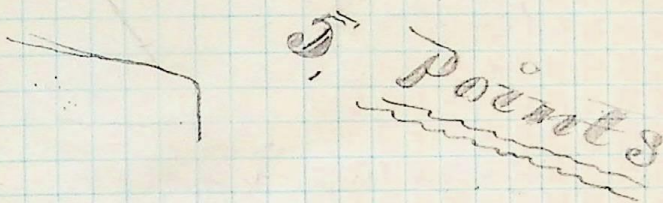
192+05

191+120 offset 10.0 north (S.S. 182+95.2 90°00R)

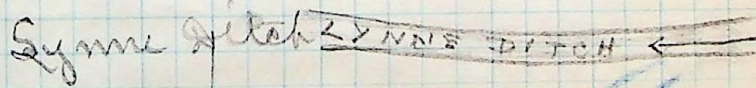
189+00

188+90 Hnd of Smith

185+50 cc. Left St. Ry.



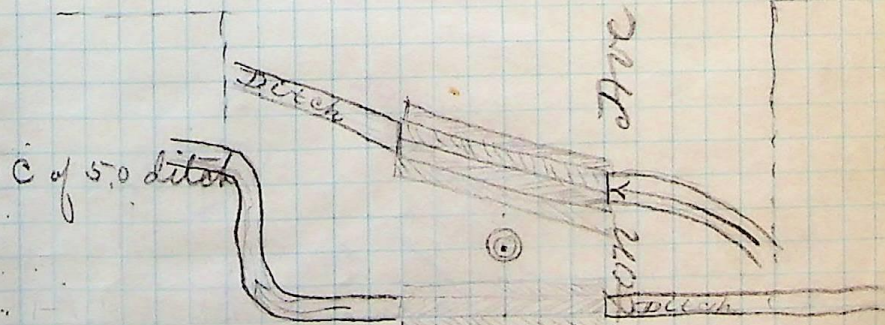
Head thorn to Smith
S End thorn to Smith
= 4.8 next to east rail



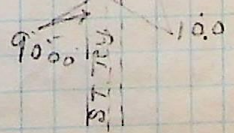
STREET

A. F. PARKER

B35



= 9.0 East of East rail at Ry



next about line

WASHINGTON ST